



Inspection boxes and accessories

06

Metal inspection boxes	185
'TUTTO' plastic inspection boxes	188
BEAUTYFAR - Magnetic cover for inspection boxes	189

Sheet steel boxes and compatible manifolds

In order to make box selection easier, the installation overviews below show two tables with the maximum number of installable ports of 1" thermo-electric manifold and 1" 1/4 male-female thermo-electric manifold.

The first example considers the overall dimension of a manifold, a ball valve or a zone valve, an intermediate connection and a closing plug, while the second example considers a manifold, an intermediate connection and a closing plug.



ART. 7148-7150

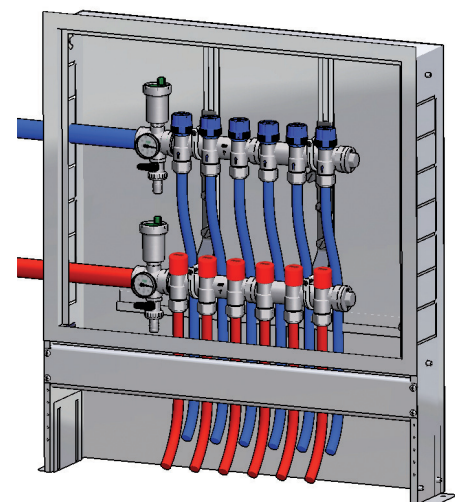
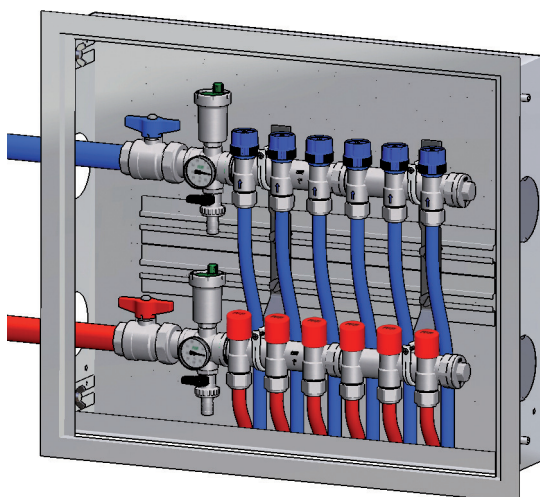


ART. 7165

Installation overview:

box width	components to install
400	VALVE + 4 PORT MANIFOLD + CONNECTION + PLUG
600	VALVE + 7 PORT MANIFOLD + CONNECTION + PLUG
800	VALVE + 10 PORT MANIFOLD + CONNECTION + PLUG
1000	VALVE + 12 PORT MANIFOLD + CONNECTION + PLUG
1200	VALVE + 14 PORT MANIFOLD + CONNECTION + PLUG

box width	components to install
400	6 PORT MANIFOLD + CONNECTION + PLUG
600	9 PORT MANIFOLD + CONNECTION + PLUG
800	12 PORT MANIFOLD + CONNECTION + PLUG
1000	14 PORT MANIFOLD + CONNECTION + PLUG



NB The installation examples refer to all models of metal boxes (Art. 7148-7150-7165).

Painted sheet steel box for distribution manifolds.

- Adjustable depth from 110 mm to 150 mm
- Cover with lock



ART. 7150

Code	size/mm	€	box
7150 40	400x450x110		1
7150 50	500x450x110		1
7150 60	600x450x110		1
7150 80	800x450x110		1
7150 100	1000x450x110		1
7150 120	1200x450x110		1

Painted sheet steel frame complete with cover for distribution manifolds.

- Cover with lock
- Suitable for boxes art. 7148-7150



ART. 7152

Code	size/mm	€	box
7152 40	400x450x110		1
7152 50	500x450x110		1
7152 60	600x450x110		1
7152 80	800x450x110		1
7152 100	1000x450x110		1
7152 120	1200x450x110		1

Zinc-coated sheet box with painted cover for distribution manifolds.

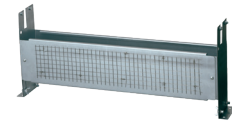
- Adjustable depth from 110 mm to 150 mm
- Cover with lock



ART. 7148

Code	size/mm	€	box
7148 40	400x450x110		1
7148 50	500x450x110		1
7148 60	600x450x110		1
7148 80	800x450x110		1
7148 100	1000x450x110		1
7148 120	1200x500x110		1

Support for floor installation of zinc-coated sheet box, Art. 7148.



ART. 7149

Code	size/mm	€	box
7149 40	400x110		1
7149 50	500x110		1
7149 60	600x110		1
7149 80	800x110		1
7149 100	1000x110		1
7149 120	1200x110		1

Painted sheet steel box for distribution manifolds. Built-in feet.

- Adjustable depth from 150 mm to 190 mm
- Cover with lock



ART. 7165

Code	size/mm	€	box
7165 80	800x700x150		1
7165 100	1000x700x150		1
7165 120	1200x700x150		1

Painted sheet steel frame complete with cover for distribution manifolds.

- Cover with lock



ART. 7166

Code	size/mm	€	box
7166 80	800x700x150		1
7166 100	1000x700x150		1
7166 120	1200x700x150		1

Plastic UNIVERSAL BRACKET for fittings (Art. 5650-5700-5750).
Suitable for housing all types of manifolds with the aid of the special supports (Art. 7500 - 7550).
Available in WHITE, BLUE and RED colour.

BI = WHITE BL = BLUE RO = RED

**ART. 7475**

Code	size/mm	€	box
7475 BI	300		1
7475 BL	300		1
7475 RO	300		1

Metal bracket complete with supports for inspection box (Art. 7148 - 7150 - 7155 - 7165).

**ART. 7480**

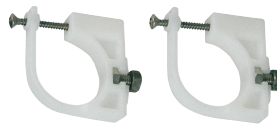
Code	size	€	box
7480 34	3/4"		6
7480 1	1"		6
7480 114	1"1/4		6

Metal bracket for inspection box (Art. 7148 - 7150 - 7155 - 7165).

**ART. 7485**

Code	€	box
7485		25

Supports for manifolds preset to be hooked on metal bracket (Art. 7485).

**ART. 7490**

Code	size	€	box
7490 34	3/4"		50
7490 1	1"		50
7490 114	1"1/4		50

Slide for bracket locking on sheet inspection box (Art. 7150 - 7155).

**ART. 7153**

Code	€	box
7153		-

Kit for frame locking on sheet inspection boxes, complete with:

- nr. 4 M5x10 wing screws
- nr. 4 M6x10 wing screws

**ART. 8556**

Code	€	box
8556 08		-

Kit for slides locking on sheet inspection boxes (Art. 7150 - 7155 - 7165) complete with:

- nr. 4 M8 nuts
- nr. 4 M8 screws
- nr. 4 washers

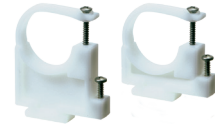
**ART. 8557**

Code	size	€	box
8557 04	M8		-

Sheet box with painted cover and built-in feet for distribution manifolds

- Adjustable depth from 80 mm to 120 mm
- Cover with lock

Supports for distribution, modular and thermo-electric manifolds fixing.



ART. 7553

Code	size	€	box
7553 1	1"		100

ART. 7158

Code	size/mm	€	box
7158 60	600x500x80		1
7158 85	850x500x80		1

Installation indications

Number of outlets	Boxes code
up to 7 outlets	7158 60
up to 12 outlets	7158 85

Manifolds

1" M-F return manifold: art.3913 from 4 to 12 outlets

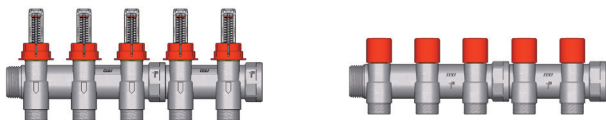


On the supply line it is possible to install the following:

1" M-F manifolds with flowmeters: art. 3970 from 4 to 12 outlets

or

1" M-F balancing manifolds: art. 3923 from 4 to 12 outlets



Supports art. 7553 for manifolds fixing

To fix the manifolds into the boxes, there are two horizontal guides in which the supports, art. 7553 1, will be placed.

The pair of supports inside the package have two different sizes:

- The short support will be used for the manifold installed on the top
- The long support will be used for the manifold installed below in order to allow the passage of the pipes of the upper manifold.

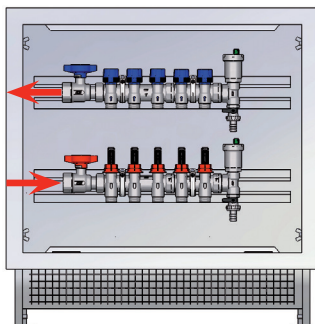
SHORT SUPPORT FOR UPPER MANIFOLD



LONG SUPPORT FOR LOWER MANIFOLD



Components to install for connections on the left



Art. 4071 138
1" M connection with automatic air vent valve and drain cock

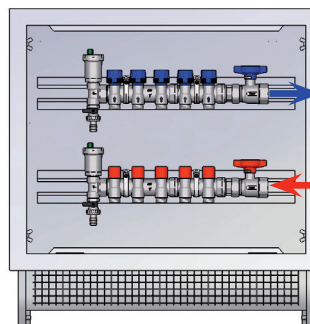
Art. 4071 M138
1" M connection with manual air vent valve and drain cock

Art. 3054 1R
1" F-F red temperature gauge holder ball valve

Art. 3054 1B
1" F-F blue temperature gauge holder ball valve

Art. 2653 80
80°C temperature gauge for valve

Components to install for connections on the right



Art. 4070 138
1" F connection with automatic air vent valve and drain cock

Art. 4070 M138
1" F connection with manual air vent valve and drain cock

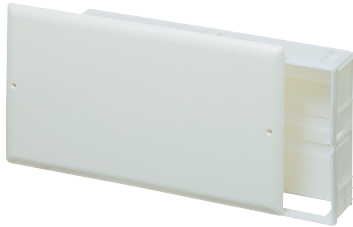
Art. 3058 1R
1" M-F red temperature gauge holder ball valve

Art. 3058 1B
1" M-F blue temperature gauge holder ball valve

Art. 2653 80
80°C temperature gauge for valve

"TUTTO" plastic inspection box.

- Suitable for installation of zone valves and thermo-electric manifolds for heating systems
- To fix the manifolds in the box use the supports (Art. 7500 - 7550)
- The cover can be press-fitted, or with screws

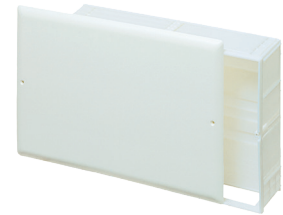


ART. 7410

Code	size/mm	€	box	pack
7410 50	500x410x100		1	4
7410 70	700x410x100		1	4
7410 90	900x410x100		1	4

"TUTTO" plastic inspection box.

- Suitable for housing the manifolds with the aid of the special supports (Art. 7500 - 7550)
- Cover fixed with screws
- Not suitable to install thermo-electric manifolds

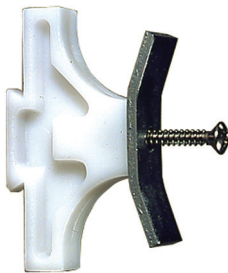


ART. 7420-7425-7450-7460

Code	size/mm	€	box	pack
7420	300x250x80		1	14
7425	400x250x80		1	12
7450	480x250x80		1	10
7460	600x300x80		1	5

UNIVERSAL support for the fixing of coplanar manifolds (Art. 3750 - 3751) to the following products:

- Art. 7410-7420-7425-7450-7460
- Art. 7475

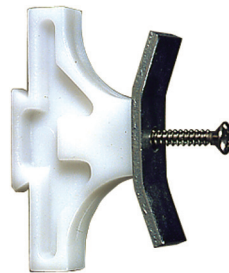


ART. 7500

Code	€	box
7500		100

UNIVERSAL support for the fixing of coplanar manifolds with stop valves (Art. 3752-3753-3754) to the following items:

- Art. 7410-7420-7425-7450-7460
- Art. 7475

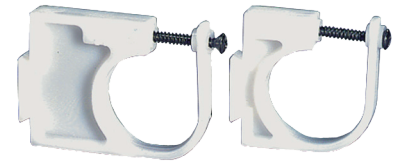


ART. 7510

Code	€	box
7510		100

Supports for the fixing of simple, modular, thermo-electric and MULTIFAR manifolds to the following items:

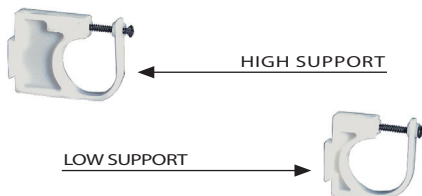
- Art. 7410-7420-7425-7450-7460
- Art. 7475



ART. 7550

Code	mis	€	box
7550 34	3/4"		100
7550 1	1"		100
7550 114	1"1/4		100

Single support for the fixing of simple, modular, thermo-electric and MULTIFAR manifolds.

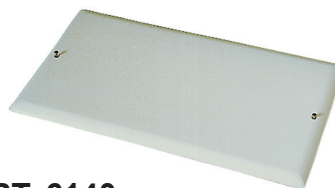


ART. 7551

Code	size	type	€	box
7551 34A	3/4"	high		1
7551 1A	1"	high		1
7551 114A	1"1/4	high		1
7551 34B	3/4"	low		1
7551 1B	1"	low		1
7551 114B	1"1/4	low		1

Cover for "TUTTO" box with fixing screws.

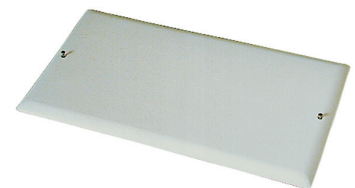
- 6140 300 for Art. 7420
- 6140 400 for Art. 7425
- 6140 480 for Art. 7450
- 6140 600 for Art. 7460



ART. 6140

Code	size/mm	€	box
6140 300	300x250		1
6140 400	400x250		1
6140 480	480x250		1
6140 600	600x300		1

Cover for "TUTTO" box Art. 7410 with fixing screws.



ART. 6141

Code	size/mm	€	box
6141 500	500x410		4
6141 700	700x410		4
6141 900	900x410		4


BEAUTYFAR - Magnetic cover for inspection boxes.

- Magnetic fixing system
- Suitable for "TUTTO" boxes range
- Nice design
- 300x250 sizes for Art. 7420
- 400x250 sizes for Art. 7425
- 480x250 sizes for Art. 7450



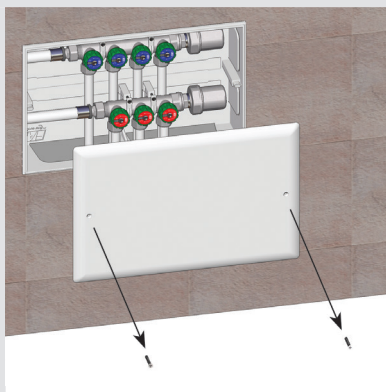
BEAUTYFAR

ART. 6142

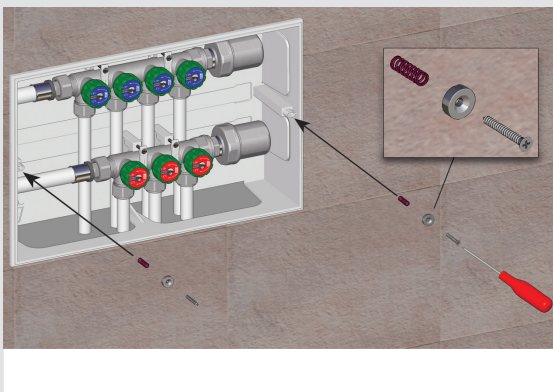
Code	colour	finish	size/mm	€	box
6142 300BL	white	glossy	300x250		1
6142 300GS	gray	metallic	300x250		1
6142 300BO	white	matt	300x250		1
6142 300NO	black	matt	300x250		1
6142 400BL	white	glossy	400x250		1
6142 400GS	gray	metallic	400x250		1
6142 400BO	white	matt	400x250		1
6142 400NO	black	matt	400x250		1
 6142 480BL	white	glossy	480x250		1
 6142 480GS	gray	metallic	480x250		1
 6142 480BO	white	matt	480x250		1
 6142 480NO	black	matt	480x250		1

Installation example:

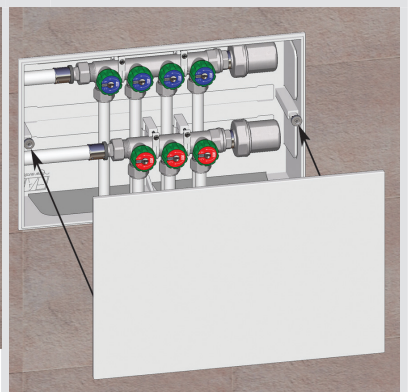
1 Unscrew the fixing screws from the cover installed on the TUTTO plastic box. Remove the cover.



2 Screw the screws (supplied in the package) by inserting the spring and the magnetic disc, by following the order shown in the picture



3 Install BEAUTYFAR, matching the metal inserts on the inside, with magnetic discs screwed to the box

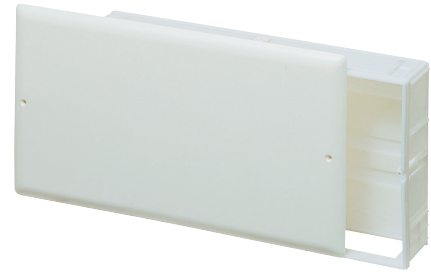


Manifolds suitable for 'TUTTO' boxes

Dimensions have been calculated in relation to the assembly of a manifold, a blind plug and a 3-piece bent connection.

3/4"-1" manifold. Centre distance between ports: 36mm

Number of outlets	Boxes width
3	300
4	300
5	400
6	400
7	400
8	480
9	480
10	600
11	600
12	600



Manifolds with 36mm centre distance between ports

3000-3050-3100-3300-3350-3400-3150-3200-3250
3175-3225-3275-3450-3500-3550-3475-3525-3575

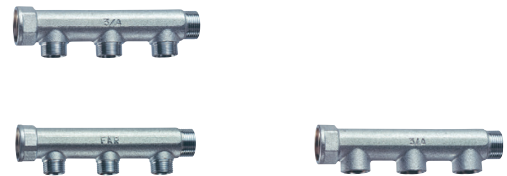


3/4"-1"-1 1/4" manifold. Centre distance between ports: 50mm

Number of outlets	Boxes width
3	300
4	400
5	400
6	480
7	480
8	480
9	600

Manifolds with 50mm centre distance between ports

3401-3402-3403-3600-3650-3700-3625-3675-3725



3/4"-1" coplanar manifold. Centre distance between ports: 40mm

Number of outlets	Boxes width	Number of manifolds
4+4	300	2
6+6	400	3
8+8	480	4
10+10	600	5

Manifolds with 40mm centre distance between ports

3750-3751



3/4" coplanar manifold. Centre distance between ports: 48mm

Number of outlets	Boxes width	Number of manifolds
2+2	300	2
2+4	300	3
4+4	300	4
4+6	400	5
6+6	400	6

Manifolds with 48mm centre distance between ports

3752-3753-3754



3/4"-1" Multifar manifold. Centre distance between ports: 45mm

Number of outlets	Boxes width
3	300
4	300
5	400
6	480
7	480
8	600
9	600
10	600

Manifolds with 45mm centre distance between ports

3818-3819-3821-3822-3823-3824-3825-3826-3850-3851
3856-3859-3860-3869-3870-3872-3873-3875-3876
3878-3879-3900-3901-3906-3834-3835-3837

